

社會的支持

Your Support

為讓幼兒得到全面的成長發展，我們除了善用社會福利署的資助外，亦需要社會人士的捐助，你點滴的支持，將成為幼兒成長的重要基石。

We need your support to contribute further to our children's healthy development despite sub-vented by the Social Welfare Department. Your support would brighten up our children's future.



請到以下網址支持童樂居的服務

Please visit below link to support CRH's work.

<http://www.hkspc.org/CRHdonation>



(印刷1000張, 11/2018修訂)

生活與學習

Living & Learning

應對群體照顧的挑戰，給幼兒如在家庭生活和在學校學習的環境。

Cope with the challenges of caring for large group of young children, CRH strives to provide life alike to family and school for our children.

全面教顧

Holistic Educare Service

為幼兒提供適切發展的照顧及培育服務，促進他們的健康及成長發展。

CRH provides developmentally appropriate care and education services to foster health and development of young children.



專業團隊

Professional Team

幼兒工作人員、護士、社工及臨床心理學家(每月到訪2次)共同關顧幼兒的健康和成長發展，設計及推行多元化的活動，滿足每位幼兒的身心需要。更與不同專業人士協作，為有需要的幼兒提供早期識別及訓練。

CRH has a professional team consists of child care workers, nurses, social workers and clinical psychologist (who visits twice a month) taken care of the health and development of young children. We work together with other professionals to provide early identification and training for the young children in need.

家長支援

Support to Parents

協助家長與孩子建立正面的親子關係及掌握基本的親職技巧。

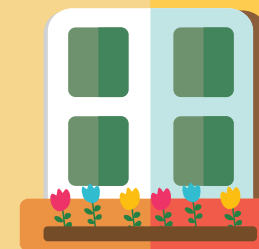
CRH supports parents to develop positive parent-child relationship and acquire basic parenting skill.

愛與關懷

Love and Care

透過義工服務，既可豐富幼兒的生活經驗，亦可讓每位幼兒感受多一份關愛，滿足其情感依附需要。

CRH strives to develop volunteer services to enrich children's life experience and fulfil the need of emotional attachment.



香港保護兒童會 童樂居

Hong Kong Society for the Protection of Children
Children's Residential Home



香港保護兒童會簡介

About HKSPC

香港保護兒童會自1926年成立，是香港歷史最悠久的兒童慈善機構之一。我們致力與社會攜手向兒童及其家庭提供照顧、關懷及教育服務，促進兒童身心健康發展，保護及倡導兒童的福祉。

Hong Kong Society for the Protection of Children (HKSPC) has been committed to nurture children in their early childhood since 1926. Being one of the most established organizations in the field, we strive to provide care, love and education service to both children and their families. It has always been HKSPC's mission to build a "Healthy, Happy and Safe" environment for children from all backgrounds.



童樂居簡介

About Children's Residential Home (CRH)

服務宗旨及目標

Service Objectives

- 提供24小時住宿服務，讓幼兒獲得適當的照顧及培育，身心得到健康發展
- 為住宿幼兒之家長提供支援服務
- 期望幼兒最終能重返健康快樂的家庭，與家人共聚天倫樂
- Offer 24 hours residential care service and nurture to young children, to facilitate their whole-person development.
- Offer support to the parents of young children.
- Prepare young children return home and live with their families healthily and happily.

服務對象

Target Group

來自家庭未能提供適當照顧的3歲以下嬰幼兒
(健康及發展狀況適合接受院舍照顧服務)

Children under 3 years old who cannot not be adequately taken care by their families.
(Health and development are suitable to be taken care under residential service.)



服務類別

Types of Residences

短期位：可住宿3個月

長期位：可住宿至3歲以下

由轉介社工向社會福利署「兒童住宿照顧服務中央轉介系統」查詢及提出申請

Short-term placement: 3-month stay

Long-term placement: Stay up to under 3 years old

Referral and enquiries should be made by social worker through the Central Referral System for Residential Child Care Service of the Social Welfare Department.

緊急位：可住宿3個月

轉介社工可於星期一至六 9am-6pm 直接向本院查詢

Urgent placement: 3-month stay

Referral and enquiries can be made by social worker by phone from Mon to Sat 9am to 6pm.

申請及退出手續

Admission and Discharge Procedures



入住安排

Admission Procedures

- ✓ 須經社會福利署、醫務社會工作部或非政府機構的社工評估需要及轉介
- ✓ 合適的服務對象須經註冊醫生檢驗身體，證明其健康適合入託
- ✓ 監護人須同意入託，並簽妥有關文件
- ✓ 轉介社工須陪同家長或得到家長授權辦理入託手續，並簽妥有關文件
- ✓ Referral needs to be made directly by social workers from the Social Welfare Department, medical social work service or other non-governmental organizations.
- ✓ Children will only be admitted upon the receipt of health certificate issued by registered doctors, certifying that they are healthy and fit for admission.
- ✓ Guardian should agree and sign the relevant admission documents.
- ✓ Referring social worker should accompany parents or obtain authorization from parents for the admission procedure and sign relevant admission documents.

退出服務

Discharge Procedures



家長提出自願退出服務時(受保護令者除外)，須通知其轉介社工。經有關社工簽發離院信件，並到本院辦理離院手續，家長方可接子女離院

Parents/ guardian can voluntarily withdraw their children from the service except those under court order. Referring social worker should be informed and all parties are required to complete necessary formalities for discharge.

辦公時間

Office Hours

星期一至五 Mon to Fri : 09:00- 13:00, 14:00- 17:00

星期六 Sat : 09:00- 13:00

星期日及公眾假期休息

Closes on Sunday and public holiday

- 📍 九龍旺角砵蘭街387號2-3樓
2/F-3/F, 387 Portland Street, Mongkok, Kowloon
- ☎ 2391 6664
- ☎ 2391 5251
- ✉ crh@hkspc.org

地圖

Map

